

FL-SME31



MAIN FEATURES

Voltage	100 ~240 V - 50/60Hz 24 VDC
Motor Cover	Thermoplastic
Speed	500 - 2300 rpm
Insulation class	F
Coupling Motor-Fan Blade	Diameter from 154 to 300 mm
Rotation direction	Single rotation CCW Reverse on start Reverse on demand
Speed	Single speed, 2 Speeds, Stepless speed
Operating temperature	-30°C ~ 60°C
Mounting position	Any
Duty cycle	Continuous operating (S1)
Protection	IP 65
Bearing Type	Ball Bearing
Life expectancy	50.000 hours
Certifications	CE, UKCA (pending), UL (pending)
Motor Protection	Via Electronics
Standard	EN 60335-1 EN 60335-2-89

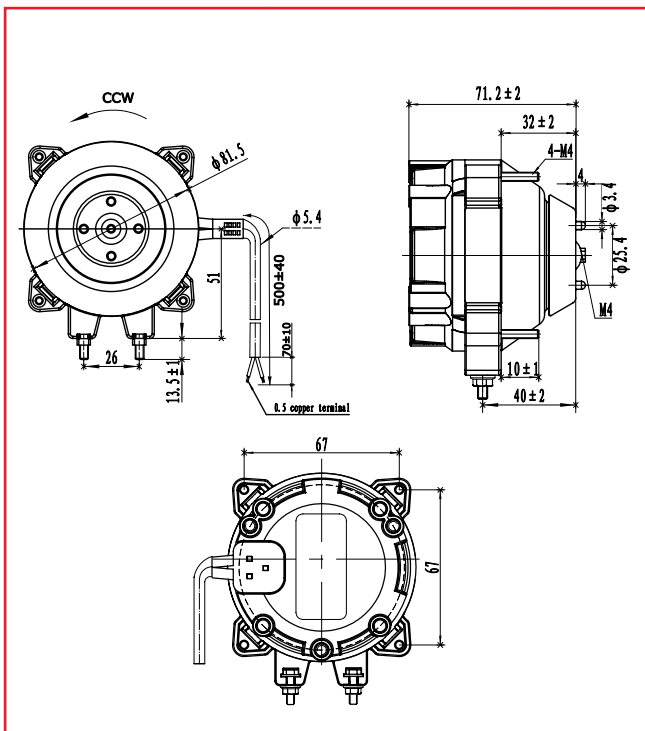
Specifications

Nominal data		Voltage	Frequency	Speed	Output capacity
Type	Features	V	Hz	rpm	W
FL-SME310S	Standard CW&CCW 2 Speeds	100 ~240 V 24 VDC	50/60 Hz /	500 ~ 2300	4
FL-SME310H					7
FL-SME312L					9
FL-SME312M	Standard CW&CCW	100 ~240 V 24 VDC	50/60 Hz /	500 ~ 2300	12
FL-SME312H					16
FL-SME312Z					22

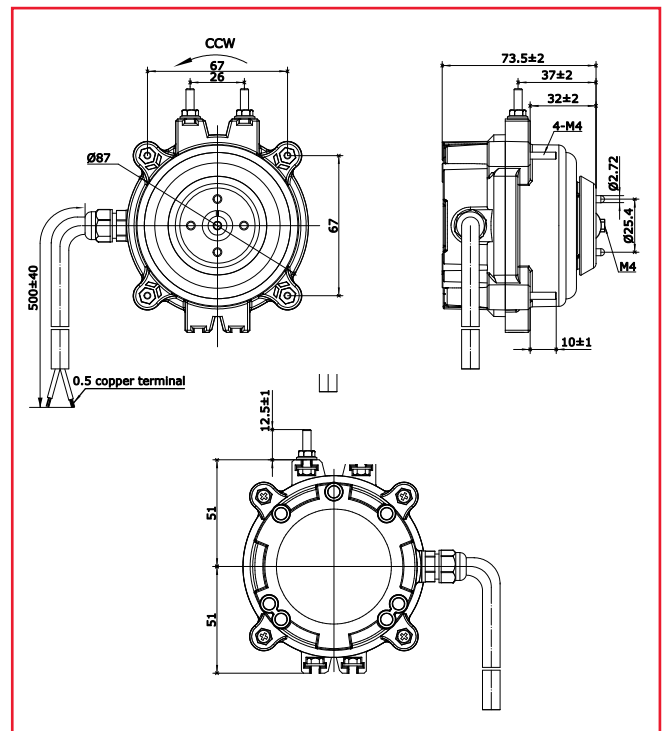
Technical Drawing

Unit:mm

Model FL-SME310S/H e FL-SME312L/M/H



Model FL-SME312Z



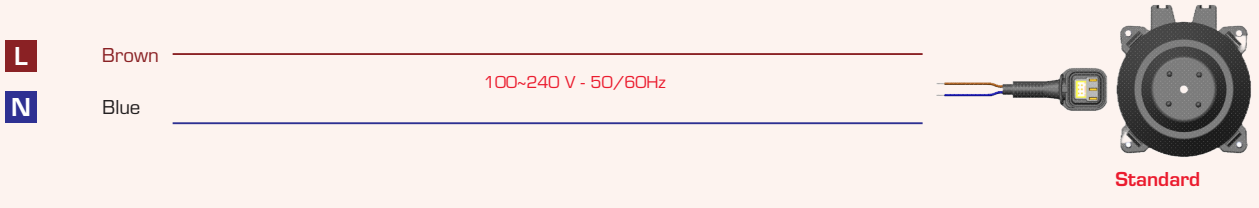
1. Specifications might change without notice;

2. Special design on request

Connection Diagram

Standard

The standard version maintains a constant speed control pre-set. This features helps the cooling system working properly and avoiding the noise generated by the fluctuation of motor speed.

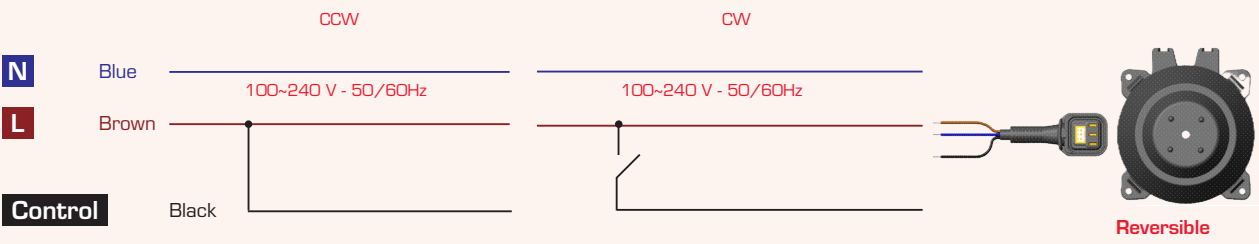


Reverse on start

At power up, the motor runs clockwise, there is no extra signal control needed to achieve this function. This function is used to blow dust away from the heat exchanger to make the refrigeration system more efficient.

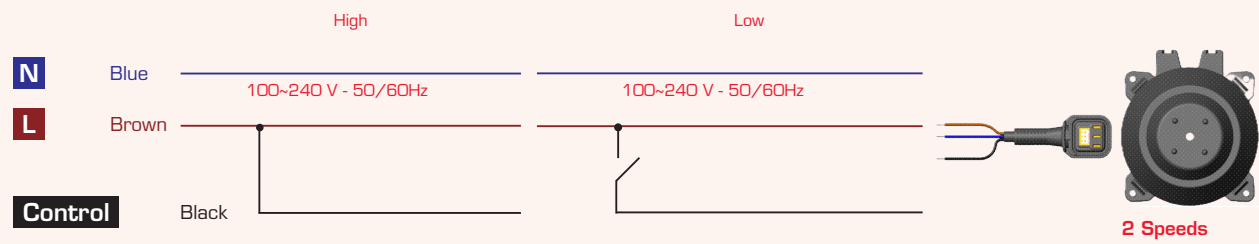
Reverse on demand

This function allows to determine the time and duration of reverse running. E.g. during defrost, the motor runs clockwise to blow dust or ice away.



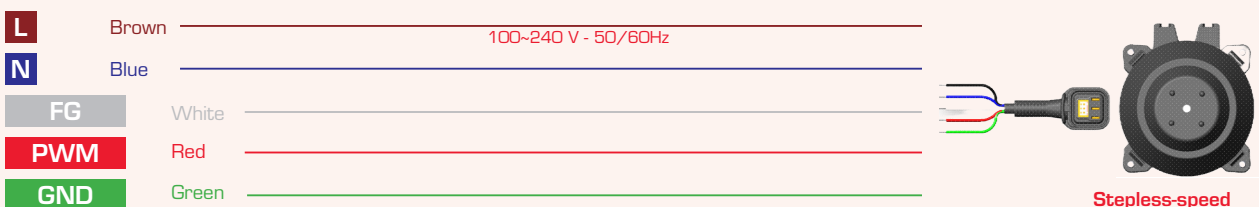
Two Speeds

SME motors can run both in high-speed and low-speed through pre-set programmed by supplier, this function is very useful where daytime and nighttime are required, thus to save more energy and reduce the noise.



Stepless-speed

SME motors step-less full control of the speed between min and max pre-set range.



1. Specifications might change without notice;

2. Special design on request

Coupling motor-fan blade

Motor Speed	ALLUMINIUM FAN BLADE					
	Ø 154	Ø 172	Ø 200	Ø 230	Ø 254	Ø 300
1300 rpm	22°	22°	22°	22°	22°	22°
	25°	25°	25°	25°	25°	25°
	28°	28°	28°	28°	28°	
	31°	31°	31°	31°	31°	
	34°	34°	34°	34°	34°	
1450 rpm	22°	22°	22°	22°	22°	22°
	25°	25°	25°	25°	25°	
	28°	28°	28°	28°	28°	
	31°	31°	31°	31°	31°	
	34°	34°	34°	34°	34°	
1550 rpm	22°	22°	22°	22°	22°	
	25°	25°	25°	25°	25°	
	28°	28°	28°	28°	28°	
	31°	31°	31°	31°		
	34°	34°	34°	34°		
1800 rpm	22°	22°	22°	22°	22°	
	25°	25°	25°	25°		
	28°	28°	28°	28°		
	31°	31°	31°	31°		
	34°	34°	34°	34°		

FL-SME310S

FL-SME310H

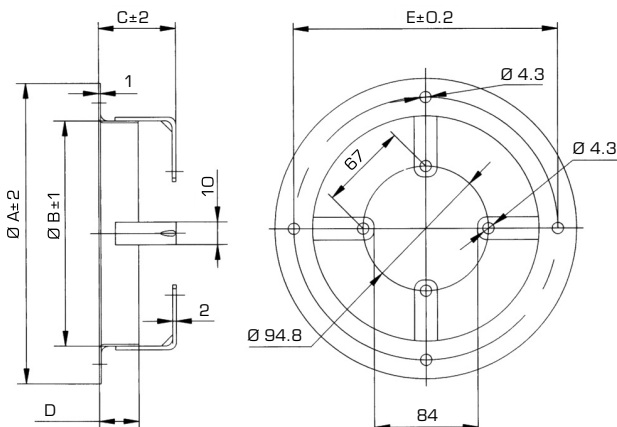
FL-SME312L

FL-SME312M

FL-SME312H

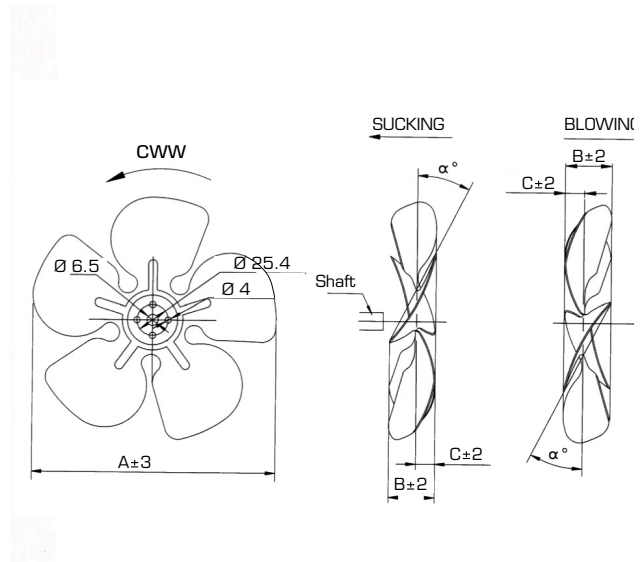
FL-SME312Z

RING



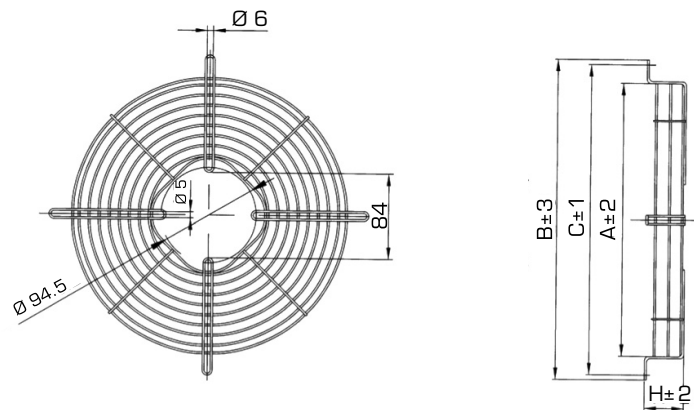
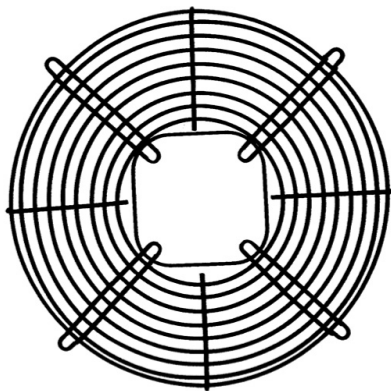
TYPE	Ø A	Ø B	C	D	Ø E
R154	200	162	49	25	190
R172	223	180	49	25	208
R200	246	208	49	25	236
R230	278	238	49	25	266
R254	300	268	49	25	290
R300	378	308	49	30	365

FAN BLADE



FAN-BLADE		F154	F172	F200	F230	F254	F300
α	B C A	$\emptyset 154$	$\emptyset 172$	$\emptyset 200$	$\emptyset 230$	$\emptyset 254$	$\emptyset 300$
22°	B	26	28	30	33	35	35
	C	13	14	15	16	16	17
25°	B	29	31	33	36	38	41
	C	15	16	17	19	19	21
28°	B	32	34	36	39	41	44
	C	17	17	19	21	21	22
31°	B	36	38	40	42	44	48
	C	18	19	21	20	22	24
34°	B	39	41	43	45	47	52
	C	21	21	24	23	23	26

GRIDS



TYPE	GM154	GM172	GM200	GM230	GM254	GM300
A	170	188	214	246	270	324
B	202	220	248	278	302	356
C	190	208	236	266	290	344
H	25	25	25	27	17	17

1. Specifications might change without notice;

2. Special design on request